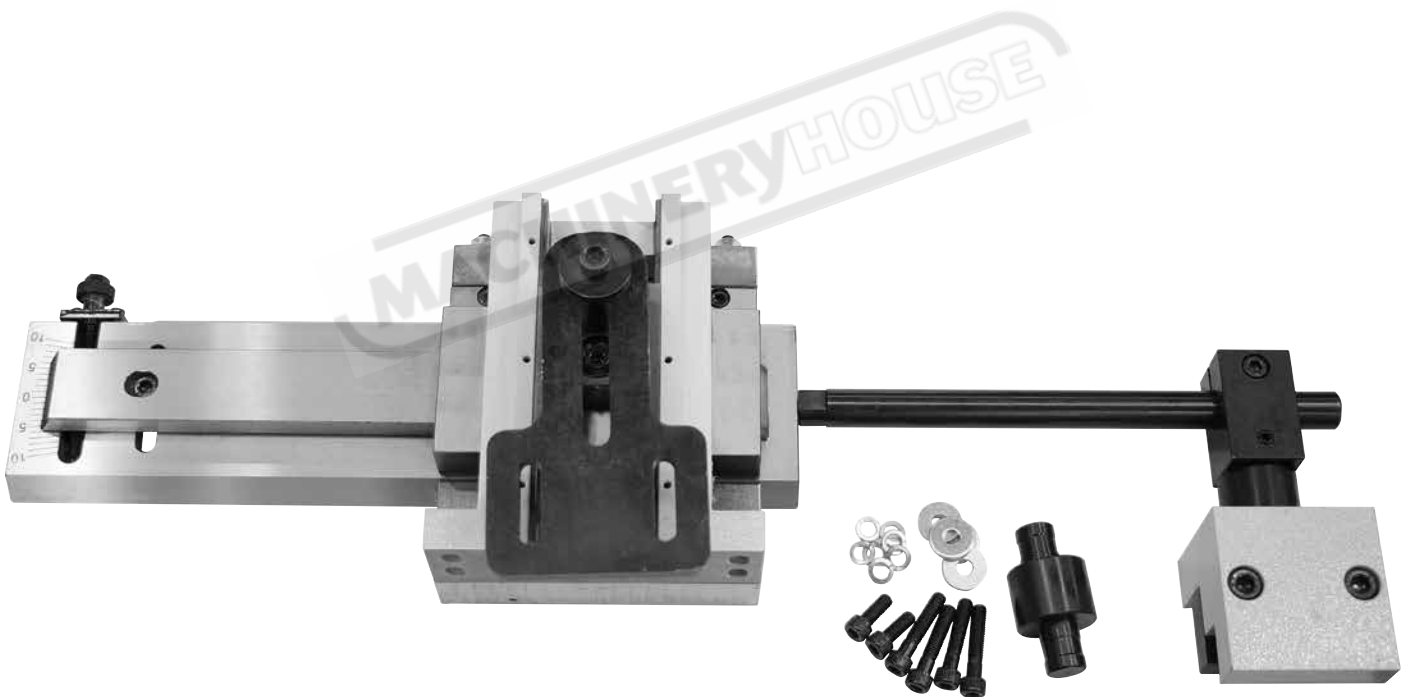


INSTRUCTION MANUAL

TPA-1000

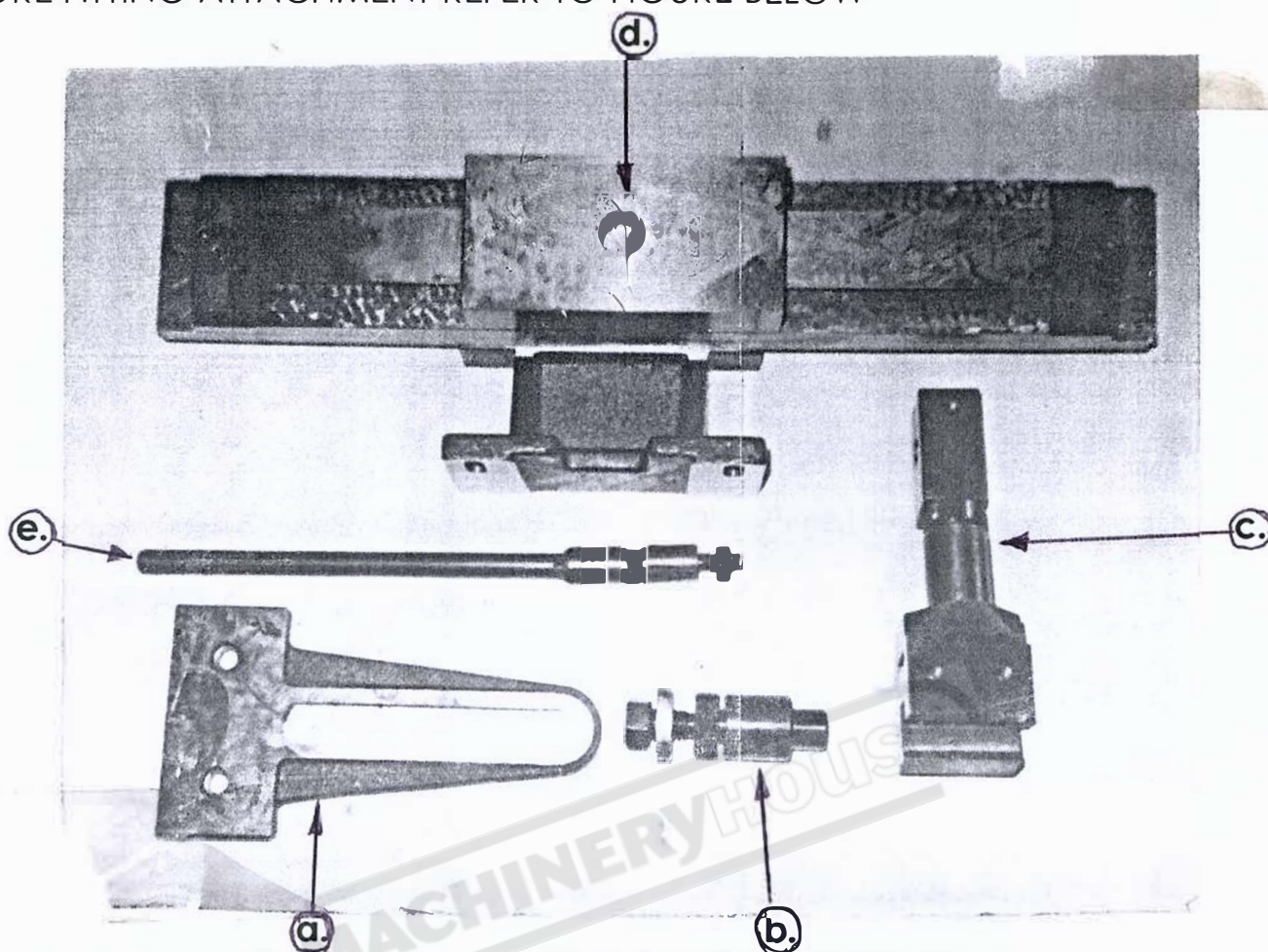
Taper Turning Attachment
AL-960B & AL-1000C/D Centre Lathes
 $\pm 10^\circ$ x 300mm Taper Length



L258

FITTING INSTRUCTIONS FOR TAPER TURNING ATTACHMENT

BEFORE FITTING ATTACHMENT REFER TO FIGURE BELOW



AFTER UNPACKING THE ATTACHMENT YOU SHOULD HAVE THE FOLLOWING,

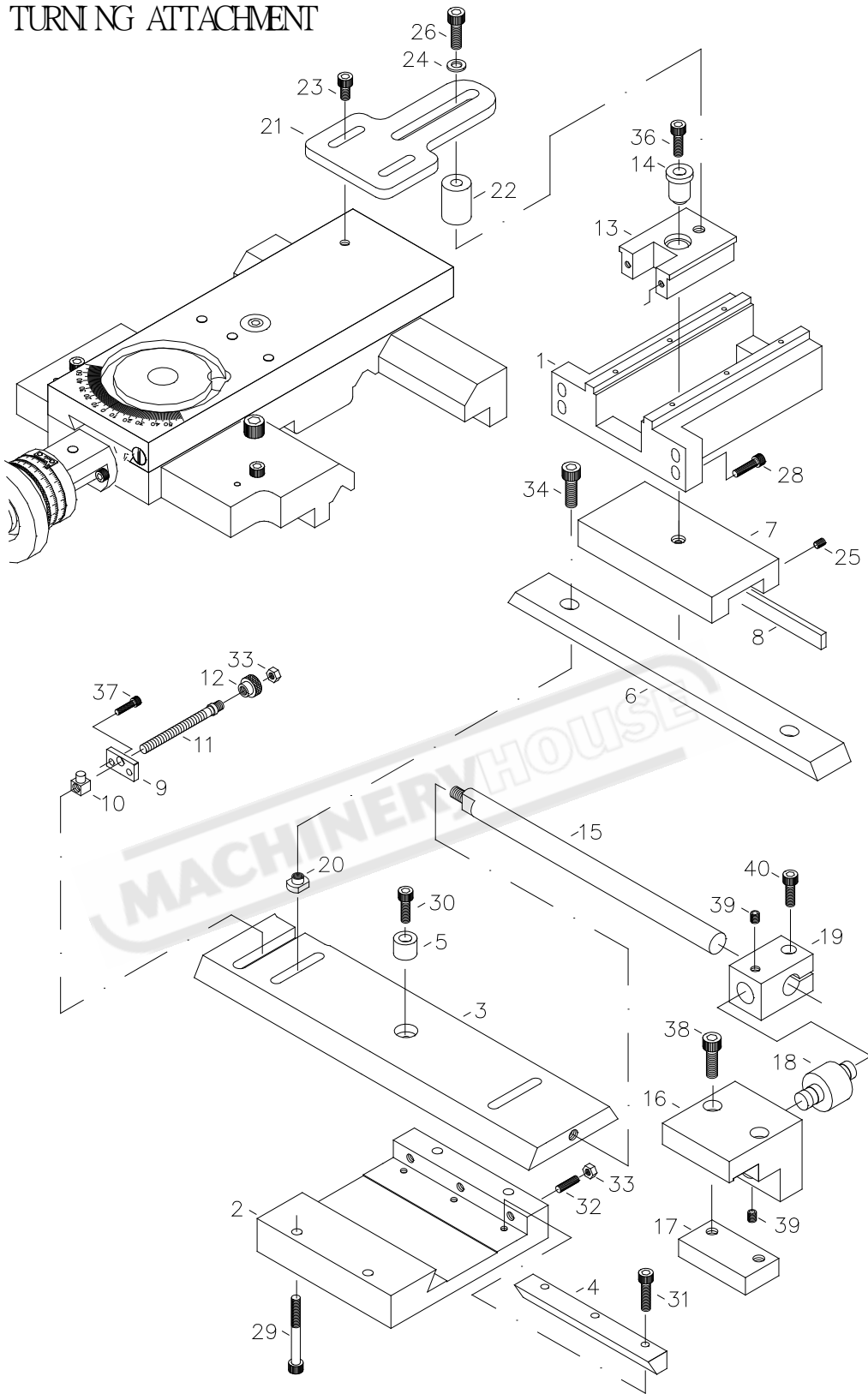
- a. 1 x CROSS SLIDE ADJUSTABLE MOUNT PLATE.
- b. 1 x NUT & LOCATION PIN ASSEMBLY.
- c. 1 x REAR BED-SLIDE CLAMP.
- d. 1 x TAPER TURNING ATTACHMENT COMPLETE WITH SLIDING BLOCK, MOUNT PLATE & ANGLE GAUGES.
- e. 1 x ROD WITH UNI-JOINT.

~YOU WILL **NEED ADDITIONAL 4 CAP SCREWS** TO ANCOR **PART a. & d.** TO LATHE M8x1.25x25mm LONG OR SIMILAR (IF NOT ALREADY SUPPLIED)

~ALSO YOU **MUST REMOVE YOUR CROSS-SLIDE NUT** SO THAT THE SLIDE MOVES BACK & FORTH FREELY & **STORE IT IN A SAFE PLACE.**

- **TAKE PART a.** & FIT TO THE TOP-REAR SURFACE OF THE CROSS-SLIDE. **IF THE MOUNT HOLES ARE PRE-DRILLED & TAPPED SKIP TO NEXT STEP.** GENERALLY THIS PART IS MOUNTED APPROX. 35 TO 40mm FROM THE REAR EDGE OF THE CROSS-SLIDE. ***NOTE*** THIS HOLE POSITIONING IS DEPENDENT ON THE CLEARANCE THAT YOU HAVE BETWEEN THE MAIN SADDLE CASTING & THE SPLASHGUARD. CHECK THIS & ALTER AS NEEDED, **REMEMBERING THAT THERE IS 6" OF ADJUSTMENT ON THIS PART.**

TURNING ATTACHMENT



TURNING ATTACHMENT

REF . NO.	PART NO.	DESCRIPTION	Q"TY
1	VES2901	SUPPORT	1
2	VES2902	BASE	1
3	VES2903	SLIDE	1
4	VES2904	TAPPED PIN	1
5	VES2905	SLEEVE	1
6	VES2906	ADJUSTABLE SEAT	1
7	VES2907	ADJUSTABLE LID	1
8	VES2908	TAPPED PIN	1
9	VES2909	WASHER	1
10	VES2910	FIXING PLATE	1
11	VES2911	ADJUSTABLE ROD	1
12	VES2912	HANDLE	1
13	VES2913	SLIDE	1
14	VES2914	COVER	1
15	VES2915	CONNECTING ROD	1
16	S2916	SLIDE	1
17	VES2917	PRESSING PLATE	1
18	VES2918	SHAFT	1
19	VES2919	FIXING PLATE	1
20	VE2419	NUT	2
21	S2921	BRACKET	1
22	S2920	COLLAR	1
23	S2923	BOLT (M8 x 10L)	2
24	S2924	SEAL (M10)	1
25	S2925	BOLT (M6 x15L)	5
26	S2926	BOLT (M10 x 60L)	1
27			
28	S2928	BOLT (M8 x 30L)	4
29	S2929	BOLT (M8 x 4 0L)	4
30	S2930	BOLT (M6 x 18L)	1
31	S2931	BOLT (M6 x 30L)	3
32	S2932	BOLT (M8 x35L)	3
33	S2933	NUT (M8)	4
34	S2934	BOLT (M8 x 30L)	2
35			
36	S2936	BOLT (M8 x 30L)	1
37	S2937	BOLT (M5 x 15L)	2
38	S2938	BOLT (M10x45L)	2
39	S2939	BOLT (M8 x10L)	2
40	S2940	BOLT (M8 x 30L)	1